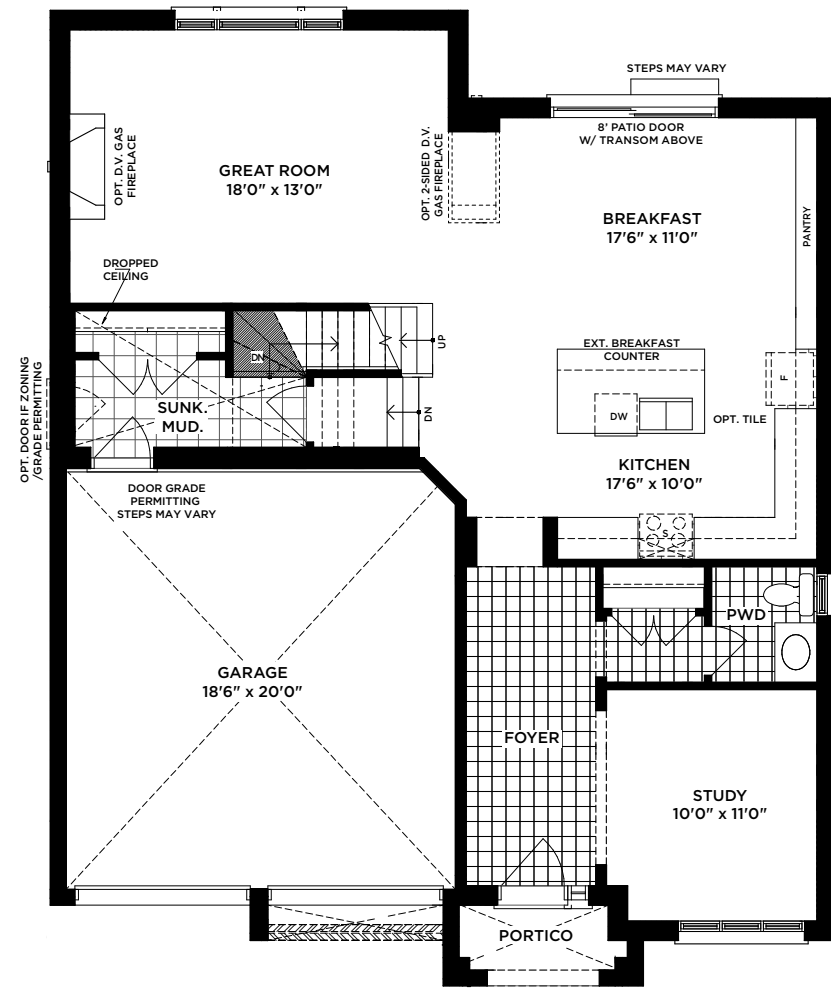


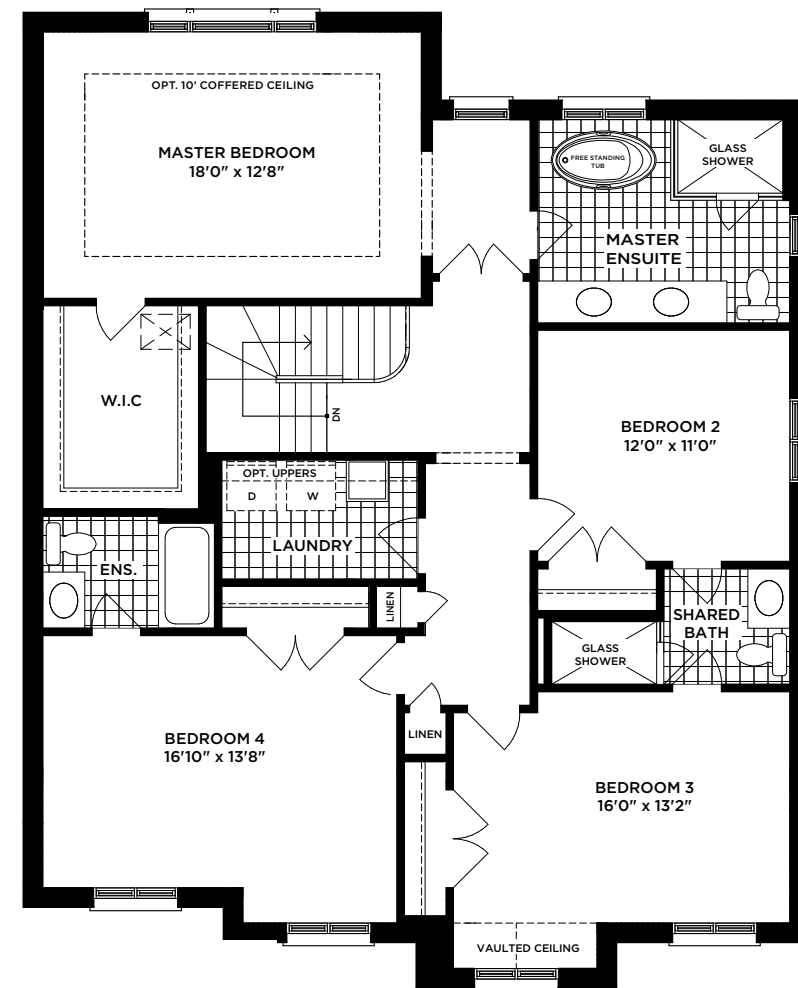
THE ALTON

ELEV. C | 2,713 SQ. FT.

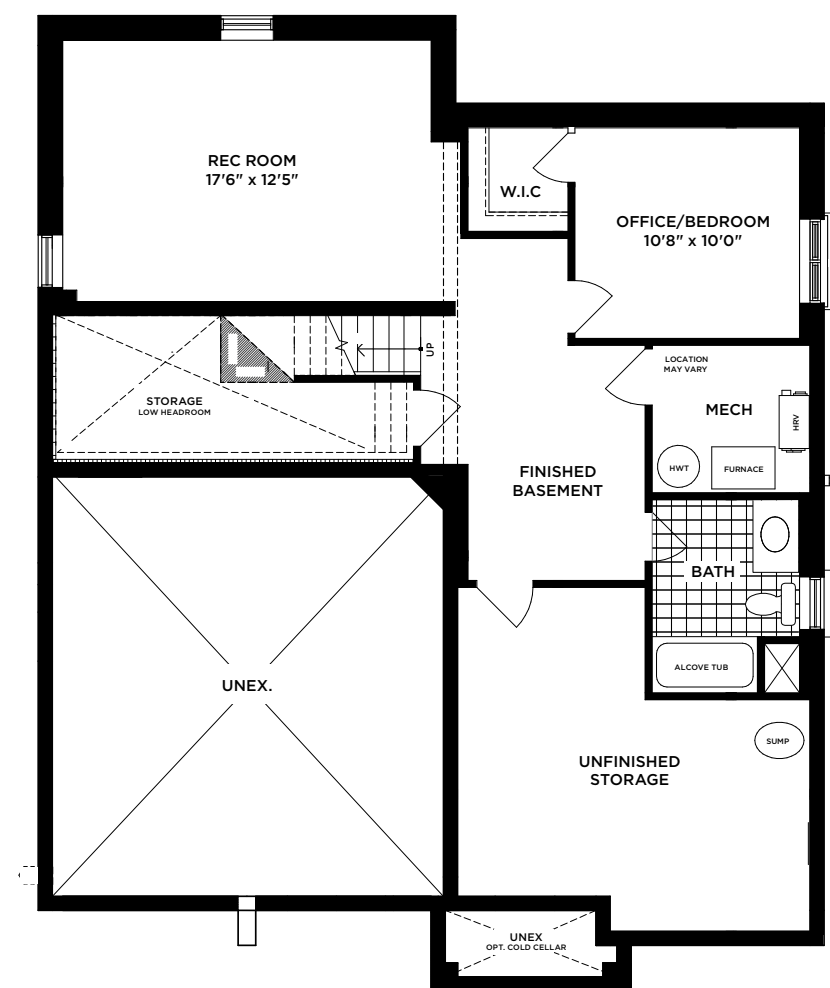




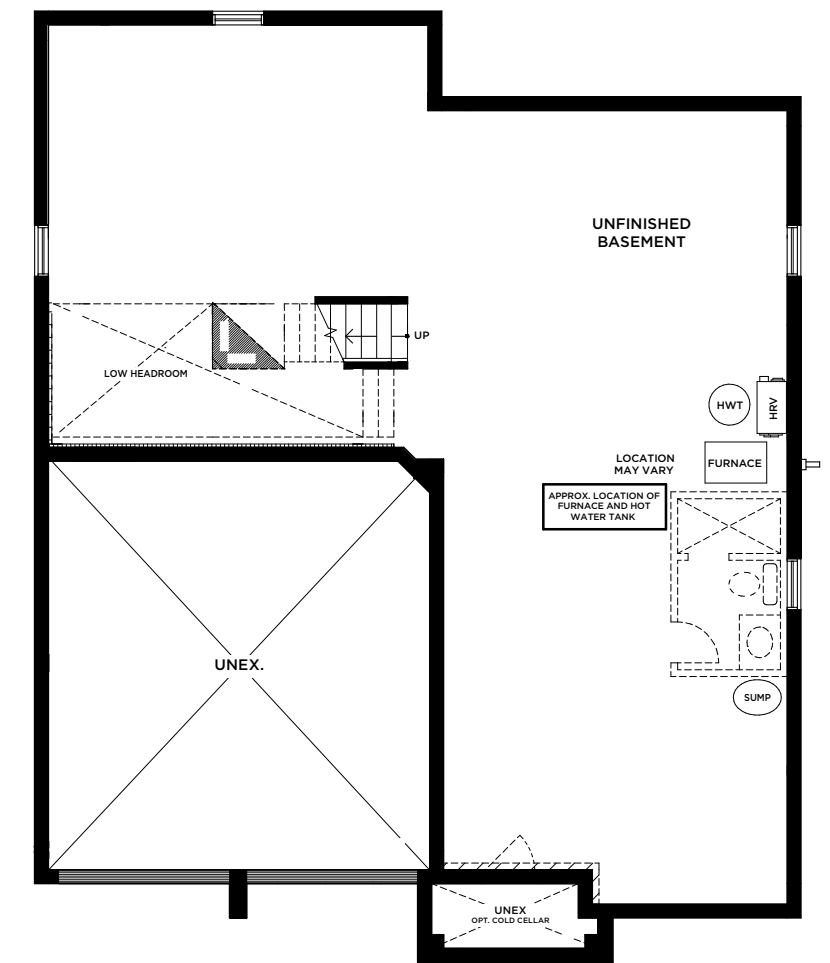
GROUND FLOOR
ELEV. A



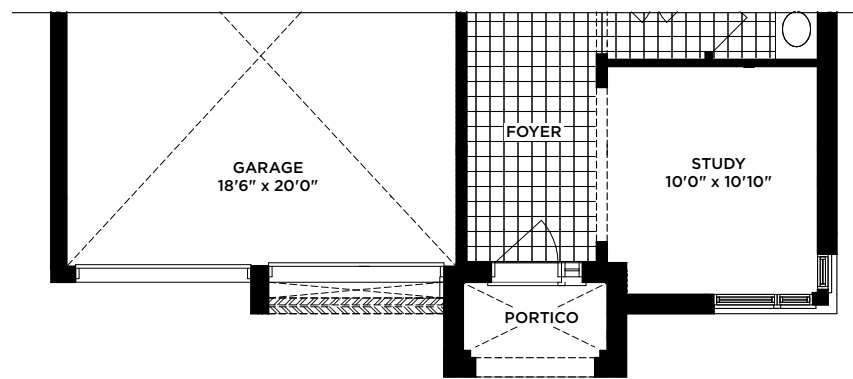
SECOND FLOOR
ELEV. A



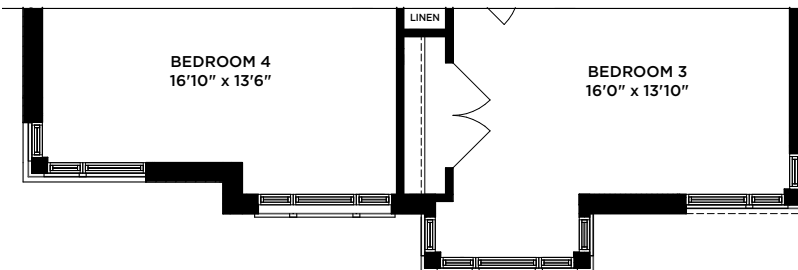
OPT. FINISHED BASEMENT
ELEV. A (ELEV. B & C SIMILAR)



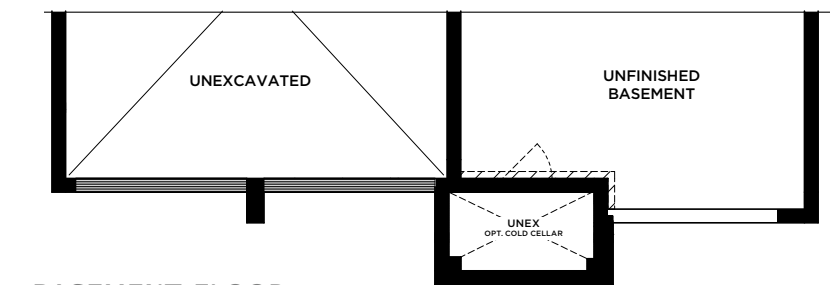
BASEMENT
ELEV. A (ELEV. B SIMILAR)



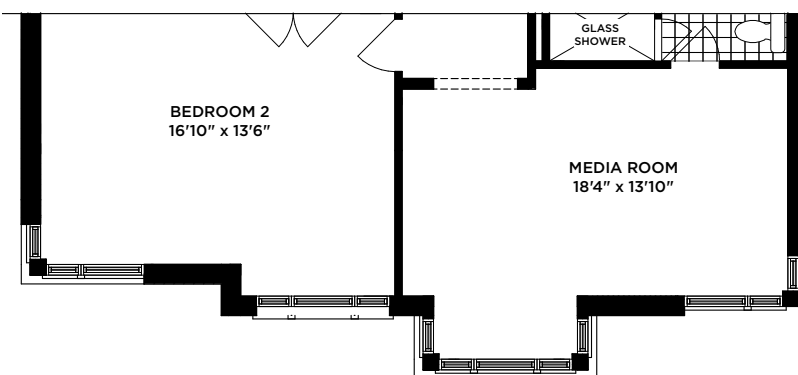
GROUND FLOOR
ELEV. C



SECOND FLOOR
ELEV. C



BASEMENT FLOOR
ELEV. C



PART. OPT. SECOND FLOOR
W/ MEDIA ROOM
ELEV. C

THE ALTON

ELEV. C | 2,713 SQ. FT.

Materials, specifications, and floor plans are subject to change without notice. Stair configurations, layout, and that all basement mechanical, rough-ins and sump location are subject to change without notice at the builders discretion. All renderings are artist concept. All floor plans are approximate dimensions. Front porches and stairs may require steps and/or railings pending final grading. Number of interior stair risers, windows and configuration subject to change without notice. Window sizing, configuration and spacing subject to change. Floor plans represent only one elevation and may be reversed subject to grading. Site may be subject to Architectural Control and therefore exterior elevations, including size, specifications, location of windows and material are subject to review and may change without notice. Actual usable floor space may vary from the stated floor area. Square footage includes open space. E. & O.E.